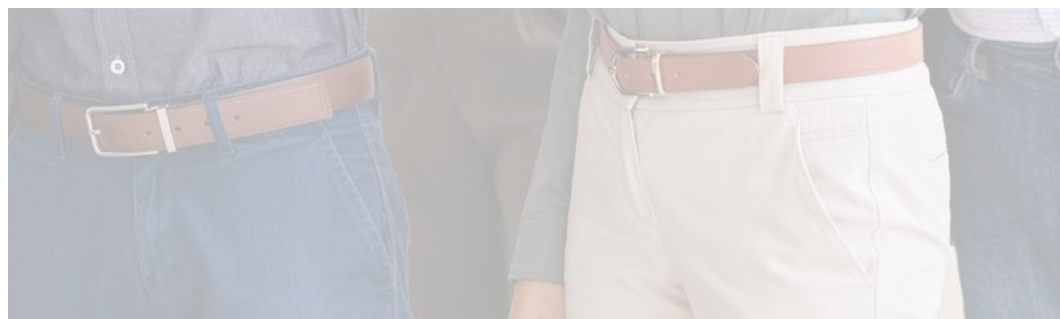


2023

loyalty program rewards

SEAMAID
LED LIGHTING SOLUTIONS





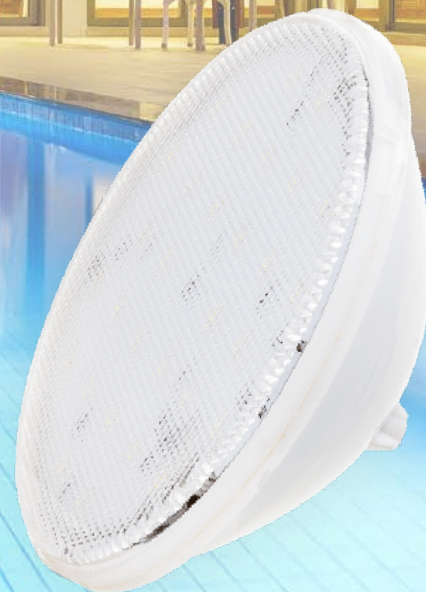
Ecoproof™ PAR56* **- 502665 & 502679**

The PAR56 ECOPROOF lamp, white and RGB lighting (remote control supplied) is 100% waterproof thanks to its specific rear connection chamber.

The solution to adopt in replacement of an incandescent lamp 300W.

White
350
points

RGB
700
points



***PAR56 Standard** **502815 & 502839 -**

This PAR56 lamp, white and RGB lighting (remote control included) is the ideal solution to replace a 300W incandescent lamp.

Universal in size, it is compatible with most projectors on the market.

White
300
points

RGB
600
points



Tubular projector* **- 502778 & 502785**

The tubular projector, illuminates spa, pool stairs or even immersed beaches! To be installed at the time of construction, it will illuminate specific areas of the pool. Once screwed into the broom socket or the wall crossing with 1.5" thread, this spotlight disappears into the wall crossing, discretion assured!

White
400
points

RGB
600
points



***Mini-projector** **500859 & 500866 -**

The mini-projector allows you to illuminate spa, pool stairs or underwater beaches!

To be installed during construction, it lights up specific areas of the pool. It is installed by screwing into a broom socket or through a wall with a 1.5" thread.

White
300
points

RGB
400
points



Flat projector* **- 502860 & 502877**

The flat projector, white and RGB lighting (remote control supplied) is compatible with all types of pools, it is your ally for lighting shell pools or pools equipped with a liner! It can be installed by screwing into a broom socket or through a wall with a 1.5" thread.

White
500
points

RGB
800
points

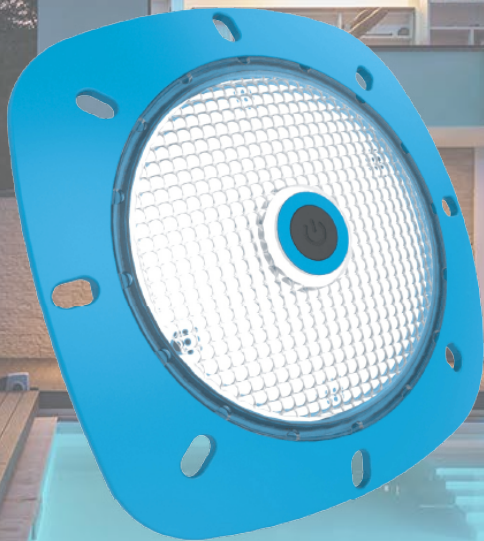


***Above-ground kit** **501498 & 500699 -**

The above ground pool kit, white and RGB lighting (remote control included) will give color to above ground pools with rigid walls, equipped with at least one 1.5" female threaded outlet.
The SEAMAID lighting kit is supplied with a "ready to install" suitcase kit.

White
450
points

RGB
600
points



No(t)mad™*

- Wht & RGB

The NO(T)MAD, 100% waterproof and mobile, it lights up wherever you need it: in the garden, at home, in the pool, on a boat, at the campsite...

With its magnetic base, it can be fixed anywhere, even in the water!

All colors
200
points



*Remote switch

501801 & 501818 -

Ideal to control several SEAMAID projectors up to 4 independent or synchronized lighting zones.

Simple on/off for white or color management for RGB.

1-channel
350
points

4-channel
600
points



Solar wall unit* **- Grey & Rust**

Ideally installed on the walls of the house or the terrace.

Rechargeable during the day thanks to its solar panel, it detects a presence within a radius of 7 meters whatever the weather conditions thanks to its integrated HF sensor.

Grey or Rust

600
points



***Solar ground-light** **Grey & Rust -**

Ideal for marking out the alleys and accesses of your house.

Rechargeable during the day thanks to its solar panel, it detects a presence within a radius of 7 meters regardless of weather conditions with its integrated HF sensor.

Grey ou Rust

800
points



LED Headlamp* SEAMAID

The headlamp has a very powerful LED strip light with a wide illumination and a spotlight on the side that shines further with a more precise beam.

Thanks to the motion sensor you can easily turn the lamp on and off. Run, work, repair... while keeping your hands free!

for
120
points

(worth about 12€)



Gift card "illicado" 150€*

This gift card credited with 150€, spendable to the cent, is valid in the biggest physical stores and on the internet, more than 25 000 stores and 55 websites. Fashion, beauty, sports, decoration...

You will find what you are looking for! What are the brands?

Where to use this box ?

<https://www.illicado.com/partenaires>

for
1500
points

(a value of 150€)



RELAIS & CHATEAUX

Gift card "Relais & Châteaux"* - Charming stay gift box

Leave with Relais & Châteaux and enjoy the enchantment of a stay in a castle, a manor or an exceptional Provencal farmhouse and enjoy a breakfast.

Offer valid for 2 persons / 1 night.

Where to use this box ?

<https://www.relaischateaux.com/fr/cadeaux/>

for
3000
points

(a value of 300€)

*Some of the gifts offered may no longer be available at the time of the request, so SEAMAID is committed to always offering an equivalent.

JBL



Jbl PartyBox 310 speaker system*

Connect your smartphone or computer via Bluetooth and take your music everywhere with you thanks to the JBL sound system! With its powerful speakers, you can listen to your playlist at home, at the beach or by the pool since it is waterproof.

Thanks to its light effects that adapt to all kinds of music, you can set the mood wherever you are, until the end of the night!

for
5800
points

(worth about 580€)

*Some of the gifts offered may no longer be available at the time of the request, so SEAMAID is committed to always offering an equivalent.

A photograph of the Sleeping Beauty Castle at Disneyland Paris, featuring its iconic pink and white architecture with blue-roofed spires and golden accents. The castle is set against a clear blue sky. The Disney logo is overlaid on the image in a large, dark blue font.

Disneyland[®] PARIS

Disneyland Paris*

**- 1 night hotel stay +
2 days tickets for 2 parks**

Experience the magic of Disneyland Paris, the largest theme park in Europe!

Enjoy one night in one of the park's hotels and 2 days of access to Disneyland Paris to relive the Disney classics and Walt Disney Studio Park to dive into the exciting worlds of Disney, Pixar and Marvel.

Offer valid up to a maximum value of 700€.

for
7000
points

(with a max. value of 700€)


*Some of the gifts offered may no longer be available at the time of the request, so SEAMAID is committed to always offering an equivalent.


These **rewards** are linked to the SEAMAID loyalty program exclusively for pool, landscape and lighting **professionals** who install SEAMAID **fixtures in Europe**.

Some of the rewards may have a **limited availability** period and will be replaced by rewards at least **equivalent in value**.

For any question, you can contact the customer service of the company ALPHADIF SAS:

 *contact@alphadif.net*

 *+33 (0) 4 98 04 62 95*

 *ALPHADIF SAS, 901 Avenue Alphonse Lavallée, BP355,
83077 Toulon Cedex 9, France*

We thank you for your trust and loyalty!

www.seamaid-lighting.com